



# THE CATHOLIC CHURCH OF SAINTS PETER AND PAUL

150 Railway St. E., P.O. Box 96 ♦ Loretto, MN 55357

Ph: (763) 479-0535 ♦ [www.sspap.org](http://www.sspap.org) ♦  [Facebook.com/sspap](https://www.facebook.com/sspap)

## JANUARY 5, 2025

THEY WERE OVERJOYED  
AT SEEING THE  
**STAR.**

— MATTHEW 2:10 —

THE EPIPHANY OF THE LORD

### Weekend Masses

#### Saturday

4:00pm..... Ss. Peter & Paul  
5:30pm..... St. Thomas

#### Sunday

7:30am..... St. Thomas  
9:00am..... Ss. Peter & Paul  
10:30am..... St. Thomas

### "Temporary" Weekday Mass Schedule

Tues, Wed, Thurs, Fri, & Sat..... 8:30am @ St. Thomas

### "Temporary" Confession Schedule

Tue, Wed, Thu, Fri ..... 7:45-8:15am @ St. Thomas  
Tue, Wed, Fri ..... 3:30-4pm @ St. Thomas  
Wednesdays..... 6:15-7pm @ St. Thomas (*w/Adoration*)  
Saturdays..... 7:30-8:15am @ St. Thomas  
3-3:45pm @ Ss. Peter & Paul in Library

### Sacrament Guidelines

#### Baptisms:

*Make arrangements with the pastor. Copy of Birth Certificate must be submitted, at the latest, one week before the baptism.*

#### Marriages:

*Make arrangements with the pastor 6-8 months in advance. Must be a registered parishioner at least six months prior to beginning marriage prep. Cohabiting couples will normally be required to separate before scheduling a wedding.*

### Welcome Visitors!

To join our parish, please go to our website, contact the Parish Office, or scan the QR code to the right to be taken to our online registration form.



**Archdiocese Victim Assistance Hotline:** (651) 291-4475

**INGLESIDE ENGINEERING**  
Water Well & Septic Systems  
In Business Since 1974  
Brian Van Beusekom  
763-479-1869

**GARY'S KOEHLER & ASSOCIATES**  
• Trucking • Excavation  
• Snow Plowing  
Contact Gary at 763-479-6601  
Contact Nick at 612-919-0629

— WE APPRECIATE OUR ADVERTISERS! —

**HAMEL BUILDING CENTER**  
478-6601  
18710 Hwy 55, Plymouth - Hamel

*Gearty-Delmore*  
**FUNERAL CHAPELS, INC.**  
37th Ave. No.  
and Vicksburg Ln.  
Plymouth  
**553-1411**  
Internet: [www.delmore.com](http://www.delmore.com)

Make it a real MOVING experience, call Mary!

**Mary Cavanaugh** REALTOR®  
612-363-2235  
MaryCavanaugh@EdinaRealty.com  
MaryCavanaugh.EdinaRealty.com

**Edina Realty**  
a Berkshire Hathaway affiliate



**The Carrie Schmitz Team**  
**KW** KELLER WILLIAMS  
CLASSIC REALTY NORTHWEST  
Each Keller Williams office is independently owned and operated.  
Carrie@SchmitzHomes.com  
763-227-1405  
[www.SchmitzHomes.com](http://www.SchmitzHomes.com)

Serving all your Twin Cities real estate needs!

**KOCH'S**  
Your Local Convenience Store  
• Gas • Food • Delmer's Meats  
• ATM • Ice Cream • Ice  
• Propane • Lottery • Bait & Tackle  
Hours: Mon-Fri: 5am - 9pm  
Sat: 6am - 9pm | Sun: 7am - 9pm  
763.479.1511 • [hskoch@hskoch.com](mailto:hskoch@hskoch.com)  
4355 Hwy. 55, Loretto/Medina, MN

**Wieneke**  
Win-A-Key to UNLOCK Your Retirement Income

**Susan Wieneke**  
Investment Advisor & Parishioner  
763-486-5441  
[susan@YourRetirementKey.com](mailto:susan@YourRetirementKey.com)  
[www.YourRetirementKeys.com](http://www.YourRetirementKeys.com)

**ST. MAXIMILIAN KOLBE ACADEMY**  
AD MAXIMAM DEI GLORIAM

**PRESCHOOL - 8TH**  
DELANO, MN

[STMAXKOLBEACADEMY.ORG](http://STMAXKOLBEACADEMY.ORG)

**PETERSON CHAPEL**  
FUNERAL SERVICES  
300 N. Main St., St. Michael • (763) 497-5362

**D.B. RASKOB CONSTRUCTION**  
Complete Residential Building & Remodeling  
David B. Raskob 763-479-1393  
[www.dbraskob.com](http://www.dbraskob.com)

**LET'S GROW YOUR BUSINESS**  
Place Your Ad Here  
and Support Our Parish!

**CONTACT ME Kristee Flynn**  
[kflynn@4LPi.com](mailto:kflynn@4LPi.com) • (800) 950-9952 x2251

**DITTER COOLING & HEATING**  
SINCE 1946  
We are Not Comfortable Until You Are  
**Cooling / Heating Electrical**  
RESIDENTIAL COMMERCIAL  
Carrier  
turn to the experts  
952-938-9500 • 763-478-9558  
[www.ditterinc.com](http://www.ditterinc.com)

**Patnode Electric**  
Quality Service • Detailed Workmanship  
Brian Patnode O: 763-498-7444  
Corcoran, MN C: 612-991-7065

**T.L. Stevens Well Company**  
Maple Plain, MN  
We are a full-service water well contractor.  
763-479-2272  
[www.tlstevenswell.com](http://www.tlstevenswell.com)

**NAPA AUTO PARTS**  
**NAPA OF CORCORAN**  
420-2321  
Mon-Fri 7am - 7pm • Sat 8am - 5pm  
19905 75th Ave. N. Corcoran Mn. 55340

**DOBOSZENSKI & SONS, INC.**  
Loretto, Minn.

Excavating, Earthwork,  
Site Development, &  
Crushing  
9520 County Road 19  
Loretto, MN 55357  
[doboszenskiandsons.com](http://doboszenskiandsons.com)  
763.478.6945

**COMING IN 2024!**

**Saint Therese**  
CORCORAN

**A unique senior living community in Corcoran**  
A variety of lifestyle options available  
right next door. Reserve your apartment today!

Independent Living | Assisted Living | Memory Care  
952.512.2019 | [DiscoverCorcoran.org](http://DiscoverCorcoran.org)

**AUTOWORKS COLLISION CENTER INC**  
Lee Schlosser  
763.477.6653

Auto: Collision Repair  
Framework • Paint Work  
Hail Damage • Free Estimates  
Rockford, MN

**HASSAN SAND & GRAVEL**  
Decorative Rock • Wood & Rubber Mulch  
Topsoil • Driveway Aggregate • Landscape Supplies  
Rogers, MN • (763) 428-2393 • [www.HassanSand.com](http://www.HassanSand.com)

**Sten Funeral Service**  
763-972-2891  
300 N. Third Street, Delano

**ADT-Monitored Home Security**  
Get 24-Hour Protection From a Name You Can Trust

- Burglary
- Flood Detection
- Fire Safety
- Carbon Monoxide

833-287-3502

**VOSS**  
And Sons Construction Inc.  
OFFICE: 763.479.6246  
SCOTT: 612.201.4892  
KEVIN: 612.201.3334

**State Farm** Insurance Agent  
Marianne Houlihan | Irmgard Brown  
885 Meander Court, Medina, MN | [www.mariannehoulihan.com](http://www.mariannehoulihan.com)

**State Farm**  
Merry Christmas & best wishes in 2025  
Office: (763) 478-5111

**DOES YOUR NONPROFIT ORGANIZATION NEED A NEWSLETTER?**  
Engaging, ad-supported print and digital newsletters to reach your community.  
[VisitIpicommunities.com](http://VisitIpicommunities.com)

**OUR COMMUNITY NEWSLETTER**  
OCTOBER EDITION

Scan to contact us!

**catholicmatch Minnesota**  
CatholicMatch.com/MN

**PRO-TECH**  
1989-2023 40 YEARS  
AUTO & TRUCK REPAIR  
Tom Gleason  
763-420-3060  
7591 Commerce St.  
Corcoran, MN  
[www.pro-techautorepair.com](http://www.pro-techautorepair.com)

**AAA** Approved Auto Repair

**FARMERS** SINCE 1919  
Main Office Hamel 763-478-6611  
Branch Office Corcoran 763-420-2025  
Member FDIC Visit Us At [www.FSBOH.com](http://www.FSBOH.com)

**MEDINA ENTERTAINMENT CENTER**  
Established 1956

Celebrate the Memories with Medina Entertainment Center  
- Private Event Spaces - Award Winning Menus - Effortless Planning  
763-478-6661 [medinaentertainment.com](http://medinaentertainment.com)

**IF YOU LIVE ALONE**  
**MDMedAlert!** STARTING AT \$19.95/mo.  
✓ Ambulance/Police  
✓ Family/Friends  
✓ GPS & Fall Alert  
**800.809.3570**  
CALL NOW!  
[md-medalert.com](http://md-medalert.com)

Full-Service Banking  
**21st Century Bank**  
**SMALL BUSINESS LENDING**  
Expansions, Acquisitions, Startups  
Equipment Purchases  
**SMALL BUSINESS BANKING**  
Checking, Savings,  
Cash Management Services  
Loretto | Ham Lake | Rogers | Minneapolis  
Blaine | Lilydale | Roseville  
21stcb.com • 763-767-2178





# CHRISTMAS 2024 FLOWER MEMORIALS

*Donated to Sts. Peter & Paul  
in Memory / Honor of:*

Roehl Family

Otten Family

Barbara Schatz

Randy Schatz

Mel

Emma

Russ

Bernice & Ted

Jim Ryan

Amos & Helen Pouliot

Amanda Kasheimer

Jerry Lanars

Lila Lanars

Donna Sawatzke

Bonnie Bryant Family

Joe Koch

Ryan Family

Bernie & Helen Maurer

Chuck & Aggie Tabatt

Jim & Charlotte Grinnell

Claudia Grinnell Moench

George & Verona Spaulding

Suzanne (Beal) Hauer

Marion Beal

Willis Beal

Clem & Gladys McCann

George & Margaret Ehnes

Kermit & Jean Wood

Louanne Bennis

Joe Ahlstrom Family

Bertha & Arvid Ahlstrom

Delores Lanz

Leona Eastman

Helen Carey

Marylou Burg

Mr. & Mrs. Ray Kramer

Mr. & Mrs. Art Magevas

Nick Oeffling Family

Carolyn Scherber Masson

Joseph C. Scherber

Gwen Scherber Leuer

Chris Yartz

Rose Peitz

Donavon Warren

Phyllis Doboszinski

Bob & Marie Follen

Roy Spurzem

Roger Huot

Mr. & Mrs. Gary Zitzloff family

The Eikmeier Family

The Richmond Family

Ron Arens

Kenneth Rischbieter

Warren Peterson

Shirley Moore

Terry Moore

Ed & Alma Triplett

Jule & Theresa Laurent

Don & Rita Pouliot

Frank & Irene Hatcher

Donna Pouliot

Jake Hughes

Dick Gardner

George A. Winter

Marie Inez Winter

Duane & Karen Schlosser  
family

Andrew & Amelia Van  
Beusekom family

Ken & Milly Van Beusekom &  
family members

Gerald & Therese Borrell &  
family members

Adrian Van Beusekom

## Epiphany Blessing, Explained

Epiphany has several meanings, including “manifestation” or “sudden insight.” In the context of the feast, it means that the God-man Jesus Christ was manifested to the world, as represented by the Magi and the different peoples from whom they came.

Epiphany marks the occasion of a time-honored Christian tradition of “chalking the doors.”

All you need for an Epiphany blessing is chalk. Some churches will provide parishioners with blessed chalk after the Epiphany Masses. Otherwise, the faithful can bring chalk to their parish and ask the priest to bless it.

There are a few different formulas for blessings out there. Still, the essence of the ritual is always the same: a priest, or usually the head of the household, calls down God’s blessing on the house and everyone who enters it, sprinkles holy water in each room of the house, and says a blessing prayer and an inscription is made above the door in chalk.

The inscription reads: the first two digits of the year + C + M + B + the last two digits of the year:

**20 + C + M + B + 25**



The initials C, M, and B represent the Magi’s names (Caspar, Melchior, and Balthasar). Spiritually, they refer to the blessing itself, represented by the Latin prayer: “*Christus mansionem benedicat*” (May Christ bless this house); the crosses recall our salvation in Christ.

Adapted from:

<https://missions.ewtn.com/seasonsandfeastdays/epiphany/>

## Epiphany Chalk Blessing

**Leader**

Peace be to this house and to all who dwell here.

**All**

And may all who enter experience Christ’s blessing.

**Leader**

Let us pray

O Lord, grant that your blessing may rest on this home and all who dwell within it. May Christ, who was made manifest to the nations through the star of Bethlehem, dwell with us always. Bless this chalk that it may be used as a sign of your protection. May this home be filled with the light of Christ, and may our comings and goings be guided by his love. We ask this through Christ our Lord.

**All**

Amen.

*The leader then writes the Epiphany inscription over the main door using the blessed chalk: 20 + C + M + B + 25.*

**Leader**

May Christ bless this house and remain with us throughout the new year.

**All**

Amen.

<https://www.catholic.com/tract/epiphany-2025-catholic-answers-guide>





*From  
Fr. Jenson's  
Desk*



This Sunday is the Feast of the Epiphany. An epiphany means to make something visible or known. The Epiphany refers to Jesus' birth being made known to the gentile peoples. The way this happened involves a star, a point of light in the nighttime sky.

We are familiar with the account of the star leading the three wisemen from the East to bring gifts to the newborn king of the Jews. A lesser-known aspect of this story is spiritual significance of stars. As we know now, we see a star because of the light they emit which reaches us from afar, perhaps even from a galaxy far, far, away.

Those who do not know God and his teachings on how to live morally and lovingly, live in spiritual darkness. This is often referred to in the Old Testament and in the Gospels: "The people who live in darkness and the shadow of death have seen a great light."

The light from the star that drew the Magi, or Wisemen, to the baby Jesus at Bethlehem is like the spiritual light of God's truth, which guides us in how to live lovingly. This is reflected in Jesus' title, the light of the world, and the use of candlelight, a living flame, at every mass.

The Jewish people were God's chosen people, through whom he would raise up the Messiah to bring salvation to all humankind. We are the recipients of that divine plan. The Magi were pagans from Mesopotamia, now modern-day Iraq. They symbolize us being called to come to Jesus and leave the darkness of sin and ignorance of God's plan for us. Modern life puts many obstacles in the way of coming to Jesus. The Magi were willing to make a weeks- or months-long journey to find the newborn king of the Jews. Their zeal is the model of the zeal that each of us needs to have in pursuing Jesus Christ. We ask our Lady and St. Joseph, who showed Jesus to the Magi when they arrived in Bethlehem, to help us to begin our journey to Jesus and never to give up or stop along the way!

- *This week, the restoration work at Ss. Peter and Paul resumes, and weekday masses and confessions there will be transferred to St. Thomas. Also note, the time of morning mass on Tuesday will be changed to match the other days of the week at 8:30AM. Please consult the bulletin for all these details.*
- *I am running out of Christmas thank you cards. Next week, when I'm sure everything has come in that is going to come in, I may have to put a general thank you in the bulletin. Your generosity has been somewhat overwhelming.*

EPIPHANY



**COFFEE & ROLLS**

All are invited to the Parish Center Dining Hall for coffee, juice and rolls following the 9 AM Mass.



**MISSION STATEMENT**

*Our mission is to form and nurture disciples of Jesus Christ in union with the Roman Catholic Church.*

**Ss. PETER & PAUL  
OFFICE HOURS**

Tuesday - Friday  
9am - 4pm

**PARISH STAFF**

**Rev. Glen Jenson, Pastor**  
frjenson@saintsppta.org

**Rev. Sebastien Bakatu**  
Weekend Assistant

**Tom Utecht, Deacon**  
dcntutecht@saintsppta.org

**Todd Ziesmer**  
Parish Business Administrator  
tziesmer@saintsppta.org

**Sherry Elsen**  
Parish Office Administrator  
selsen@saintsppta.org

**Julianne Leighton**  
Dir. of Faith Formation & Youth  
Ministry/Safe Envrnmt Coordinator  
jleighton@saintsppta.org

**Joyce Rathburn**  
Planning & Marketing Associate  
jrathburn@saintsppta.org

**Lynn Scholtes**  
Administrative Assistant  
lscholtes@saintsppta.org

**Dave Evensen**  
Director of Maintenance  
devensen@saintsppta.org

**Carrie Ferdinandt**  
Music Coordinator  
Ss. Peter & Paul Organist

**Greg Elsen**  
Volunteer Choir Director

**Trustees**

Brad Jacobs, Lee Schlosser

**Parish Council**

Bill Maurer-Chair, Lark Ahlstrom, Paul Gibson, Todd Johnson, Scott Ritter, Tim Spaulding, **OPEN POSITION**

**Finance Council**

Rachel Polson-Chair, Dan Doboszanski, Randy Elsen, Bernadette Grenzer, Jovelyn Larson

≡ SUPPORTING PARISH & COMMUNITY ≡

**FINANCIAL UPDATE** (July 2024-June 2025 contributions)  
Contributions toward our renovation project are not included.

	<u>W/E 12/29</u>	<u>Fiscal YTD</u>	<u>2024-25 Budget</u>
Envelopes .....	9,200.00	147,402.00	\$385,000.00
Loose Plate .....	164.00	5,689.23	23,000.00
Electronic Giving .....	2,175.75	48,978.05	100,000.00
<b>TOTALS .....</b>	<b>\$11,539.75</b>	<b>\$202,069.28</b>	<b>\$508,000.00</b>

	<u>W/E 12/29</u>	<u>Total to Date</u>
<b>Fr.'s Phase II Challenge .....</b>	<b>\$16,400.00</b>	<b>\$211,855.17</b>



**For online Sunday Offering Contributions,**  
scan above QR code or go to [sspap.org/online-giving](http://sspap.org/online-giving).



**For online Renovation Donations,**  
scan above QR code .

**ATTENTION PARISHIONERS:**



Catholic United Financial will once again have greeting cards in the back of church and the Parish Center for you to take and send a greeting to the home-bound and those at Haven Homes. Please take as many as you wish and send a note or drawing to brighten a senior's life. Thank you for helping bring joy to our seniors!



**Spaghetti Dinner Fundraiser**

All proceeds go to the youth of both parishes to help fund Extreme Faith Camp  
Tickets: \$12/person or \$40/family

6:30pm Saturday, January 11  
St. Thomas the Apostle, Corcoran

Want to learn more about Extreme Faith Camp?  
Go to our website or contact [jleighton@saintsppta.org](mailto:jleighton@saintsppta.org).

Wise Men Still Seek Him

THE FEAST OF THE EPIPHANY

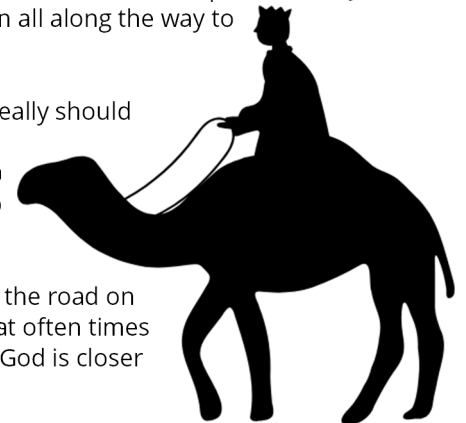
**THE OTHER WISE MAN**

“The Story of the Other Wise Man” by Henry Van Dyke was first published in 1895. It tells the fictional story of Artaban, a fourth wise man who began a journey to visit Jesus, the newborn King. Unlike his fellow Magi, he failed to make it there for the birth of Jesus because he kept pausing to help various people in need. In fact, it took him about 33 years of searching before his quest comes to an abrupt end when he is hit in the head with a falling roof shingle. His final breath takes place in Jerusalem near the place where Jesus is being crucified. As he lies dying, he hears the voice of Jesus telling him that the gifts he has given all along the way to “the least of these” he has actually given to Jesus himself.

If you have never read this story or seen the made-for-television movie based on the tale, you really should seek it out. It is a story that reminds us of a profound truth: Jesus himself rests in the lives of all those around us in need. In the story, it was the wise man’s constant response to a stewardship call that prevented him from getting where he wanted to go. In the end, where he needed to go was more significant than where he thought he should go.

If we live lives of generosity and graciousness, we may find ourselves on constant detours from the road on which we are traveling. It is in the detours and the unexpected circumstances of our journey that often times we find our true purpose in life. We think God is somewhere we must travel to, when in reality, God is closer than we think in the least likely of places.

—Tracy Earl Welliver, MTS





## GOSPEL MEDITATION

Have you ever wondered *why* the magi had gold, frankincense, and myrrh? Matthew's Gospel tells us, **"Then they opened their treasures and offered him gifts of gold, frankincense, and myrrh"** (Matt. 2:11). Why are these things their "treasures"? One possible answer is they were magicians and astrologers, and these three items were the tools of their questionable trade. In offering them to Christ, they demonstrate that they will cease using such items to predict or control life. They place this baby-king, the God of Israel, at the center of their lives, and not their own devices of control, manipulation and prediction.

Isn't that what we need to do, too? Consider, for example, the magical power of money, symbolized by the magi's gold. Seemingly whatever we ask of money, it does. It wields a god-like power over the world. It can predict the future by guaranteeing better outcomes for us — which is why it is such a tempting alternative to trusting in God. The problem is such absolute trust in money enslaves us to the economic forces that make money so powerful. In paying homage to Jesus with "gold" (i.e., tithing), we participate in his authority over (and therefore freedom from) the magical sway of money.

What things in your life do you use to predict or control your future? What in your life seems to give you power over the world? Those are your treasures. Are you tired of feeling enslaved to them? Find a way to open them and give them to Christ, and you will be freer.

— *Father John Muir*

©LPi

## WHY DO WE DO THAT? Catholic Life Explained

### Question:

Besides the Wise Men, what is significant about the Epiphany?

### Answer:

Epiphany means "manifestation," or public display. The feast is usually celebrated January 6. In the US, it is celebrated on the Sunday nearest to January 6. It originates from a story unique to Matthew (2:1-12). Magi from the East come to offer homage to the newborn King, presenting him with gifts of gold, frankincense, and myrrh.

This part of Matthew's infancy narrative differs from Luke's account of the birth of Jesus. In Luke there are no Magi, star, nor gifts. Luke has Jesus being born in a stable after Mary and Joseph's long travel from Nazareth to Bethlehem. Matthew seems to have the family living in a house in Bethlehem, where the Magi find them.

Why these differences? They stem from the needs and concerns of the audience the authors were addressing, as well as the theological stance of each author. Knowing the original intention helps get at the correct interpretation of the text.

Since Matthew was writing primarily to a Jewish community, his concern was to show that Jesus did not come just for Jews, but for Gentiles as well. From his very birth, Jesus not only manifests himself to Jews, but also to Gentiles, who are prominently included in the manifestation, symbolized by the Magi and their journey. This is the most significant aspect of the feast of Epiphany. How do you manifest Jesus to all with whom you come into contact?

©LPi

See back of  
insert for full  
details on the  
Epiphany  
Blessing.

# EPIPHANY BLESSING

## 20+C+M+B+25

The numbers represent the year (2025).  
The letters represent both the names of the  
Magi (Caspar, Melchoir, and Balthasar) and  
the phrase  
"Christus Mansionem Benedicat,"  
which is Latin for  
"May Christ Bless the House."

**CatholicLink**

Lord God of heaven and earth, you revealed your only begotten Son to every nation by the guidance of a star. Bless this house and all who inhabit it. May we be blessed with health, goodness of heart, gentleness and the keeping of your law. Fill us with the light of Christ, that our love for each other may go out to all. We ask this through Christ our Lord.





## WELL-READ MOM (WRM) BOOK CLUB -

### January Read

Tuesday, January 14

6:30 p.m. – 7:45 p.m.

In January the WRM book club will be discussing the book *“The Pearl”* by John Steinbeck.



The WRM book club will meet on Tuesday, January 14 in the **Ss. Peter & Paul Dining Room** from **6:30 p.m. – 7:45 p.m.** hosted by Meg Clemens.

VM Young Adults  
Second Saturday Swing

# NEW YEARS BALL

Saturday, January 11th, 2025  
7:00pm-11:30pm

150 Railway St E  
Loretto, MN 55357

Admission:  
Men bring drinks  
Women bring snacks

**\*\*AGES 18-39 WELCOME\*\***

## ADMISSIONS EXPERIENCE OPEN HOUSE

January 9<sup>th</sup>, 2025 at 6:30 p.m.



AVE MARIA  
ACADEMY

The best way to learn about Ave Maria Academy is to visit our Maple Grove campus and experience it for yourself. Ave Maria Academy is a Catholic school educating students ages 3 through the 8th grade. We seek to form students in an integrated way, focusing on academic, service, character, and spiritual dimensions of the human person. We offer a rigorous, classically based curriculum reflective of the great potential of each child.

Contact Mrs. Katie Gooley, Ave Maria Academy Admissions Director, with questions.

[k.gooley@avemariaacademy.org](mailto:k.gooley@avemariaacademy.org).

Visit [www.AveMariaAcademy.org](http://www.AveMariaAcademy.org) to sign up.

ST. THOMAS-ST. PETER AND PAUL-ST. ANNE  
PRESENTS:

# CATHOLIC Marriage DANCE

DANCE  
MARCH 15  
7PM-10PM  
ST. THOMAS CORCORAN

LIVE MUSIC BY:  
North Star  
BIG BAND

LESSONS  
SWING/FOXTROT  
FEB 16 MAR 2  
3:00-4:15  
BY: HELEN AND CARRIE FERDINANDT  
ST. THOMAS CORCORAN

COST:  
**\$50/COUPLE**  
INCLUDES DANCE AND LESSONS

OFFICE@SAINTANNEHAMEL.ORG  
763.478.6644

HOLY TRINITY SCHOOL  
EST. 1883  
SCIENTIA - EXCELLENTIA - AMBITIO

# Holy Trinity Open House

Sunday, January 26

Pre-K thru 12th Grade  
11:00 AM-1:00 PM

110 Winsted Ave W,  
Winsted, MN 55395

Kick-Off to  
Catholic Schools Week  
Fun for the Family!





# THIS WEEK



## LITURGICAL MINISTER SCHEDULE


### January 11, 4:00 PM

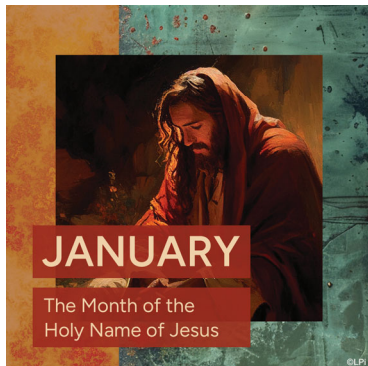
Priest ..... Fr. Jenson  
Deacon ..... Tom Utecht  
Sacristan ..... \_\_\_\_\_  
Rosary ..... Judy Arens  
Ushers ..... Lee Schlosser, Butch Peitz  
Lector ..... Gary Zitzloff  
Comm ..... Deacon Tom

### January 12, 9:00 AM

Priest ..... Fr. Jenson  
Sacristan ..... Glen Schneider  
Rosary ..... Joan Gibson  
Ushers ..... Randy Arens, Steve Beal,  
Paul Gibson  
Lector ..... Scott Ritter  
EMHC ..... Christian Young  
Choir EMHC... Sherry Elsen  
Hospitality ..... John & Bernie Grenzer

## Observances for the week of January 5, 2025

**Sunday:** The Epiphany of the Lord  
**Monday:** St. André Bessette, Religious  
**Tuesday:** St. Raymond of Penyafort, Priest  
**Wednesday:**   
**Thursday:**  
**Friday:**  
**Saturday:**  
**Next Sunday:** The Baptism of the Lord



## MASS INTENTIONS

January 7-12, 2025

Tues ..... †Dennis Kerber  
Wed ..... †Rosa Merz  
Thur ..... Parish Cluster  
Fri ..... †Fr. Stephen Adrian  
Sat, 8:30am ..... Parish Cluster  
Sat, 4:00pm ..... Phillip Bongaarts  
Sat, 5:30pm ..... †Jerome Ratke  
Sun, 7:30am ..... †Rick Falkenstein  
9:00am ..... †Bernice Schlosser  
10:30am ..... ††Adam Patnode  
& Brad Skafte

## THIS WEEK'S CALENDAR

January 6-12, 2025

### MONDAY, JANUARY 6

*Ss. Peter & Paul Parish Office  
closed on Mondays*

5:00pm KC Nicollet Assembly (DH  
& Gym)  
6:00pm Choir Practice (Church)

### TUESDAY, JANUARY 7

7:00pm OCIA @ St. Thomas

### WEDNESDAY, JANUARY 8

5:30-6pm Parish Cluster Dinner  
@ St. Thomas  
6:15-7:30pm Faith Formation

### THURSDAY, JANUARY 9

### FRIDAY, JANUARY 10

### SATURDAY, JANUARY 11

9:00am Faith & Basketball  
(Ave Maria Academy Gym)  
6:30-8pm Spaghetti Dinner Youth  
Camp Fundraiser @ St.  
Thomas  
7-11:30pm Young Adult Swing Dance  
(SPP Dining Hall)

### SUNDAY, JANUARY 12

10:00am Coffee & Rolls (Dining Hall)



## Readings for the week of January 5, 2025

### Sunday:

Is 60:1-6/Ps 72:1-2, 7-8, 10-11, 12-13  
(see 11)/Eph 3:2-3a, 5-6/Mt 2:1-12

### Monday:

1 Jn 3:22-4:6/Ps 2:7bc-8, 10-12a/  
Mt 4:12-17, 23-25

### Tuesday:

1 Jn 4:7-10/Ps 72:1-2, 3-4, 7-8/  
Mk 6:34-44

### Wednesday:

1 Jn 4:11-18/Ps 72:1-2, 10, 12-13/  
Mk 6:45-52

### Thursday:

1 Jn 4:19-5:4/Ps 72:1-2, 14 and 15bc, 17/  
Lk 4:14-22a

### Friday:

1 Jn 5:5-13/Ps 147:12-13, 14-15, 19-20/  
Lk 5:12-16

### Saturday:

1 Jn 5:14-21/Ps 149:1-2, 3-4, 5 and 6a  
and 9b/Jn 3:22-30

### Next Sunday:

Is 40:1-5, 9-11/Ps 104:1b-2, 3-4, 24-25,  
27-28, 29-30 (1)/Ti 2:11-14; 3:4-7/  
Lk 3:15-16, 21-22

## Our Lady of Loretto Knights of Columbus, Council 9601

Our Mission Statement: *We are a Catholic, family, fraternal, service organization dedicated to the values and faith of the Roman Catholic Church through our activities that promote Charity, Unity, Fraternity and Patriotism.*



To join the Our Lady of Loretto Knights of Columbus, contact Grand Knight Greg Dvorsak at 612-840-2400 or Financial Secretary Loren Spurzem at 612-423-6401 or visit their website at KC9601.mnknights.org.

## Bulletin Submissions

Bulletin articles are due by 9:00 AM on Mondays, unless indicated elsewhere in the bulletin. All articles must be completely written before submitting.  
Thank you.

# PRAYER

## PRAYER CHAIN MINISTRY

The Prayer Chain Ministry is made up of parishioners dedicated to praying for others. To place someone on a Prayer Chain, please contact Lynn Scholtes at 763-477-6359/lynncholtes@gmail.com. Thank you.

## WE PRAY FOR THOSE IN THE MILITARY

Eric Alger—Army; Patrick Eikmeier—Army National Guard; Nick Elsen—Air Force; Dalton Pouliot—Army National Guard; Nickolas Sieg—Army; Peter Weber—Air Force.

*If you would like a member of our U.S. Military listed or removed, please contact Sherry at the Ss. Peter & Paul Parish Office—*

763-479-0535 or [orselsen@saintsppta.org](mailto:orselsen@saintsppta.org).

## WE PRAY FOR THE SICK

*Because of our need to respect the privacy of individuals/families, we must have a member of the family call us to have a name included here. Unless we hear from the family, we will take a name off after 3 months. Thank you!*

Betsy Elsen (3/1)                      Mary Smith (3/11)  
Julia McGuire (3/5)                      Carol Tabery (3/5)

## PLEASE PRAY FOR OUR MEN DISCERNING THE DIACONATE

- Cory Plotts....Diaconate Formation
- Todd Ziesmer....Diaconate Formation

# Blessed Virgin's Rosary Ministry

## Prayer Intention for January 2025

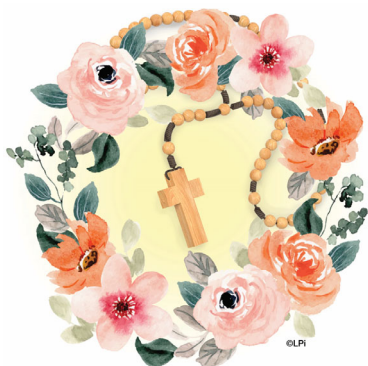
For the participants of the Blessed Virgin's Rosary Ministry and their families; and that women will choose life for their unborn child and treasure this gift from God.

*Each member is assigned a mystery of the Rosary to pray each day. New members are always welcome. To join, contact Sherry in the Ss. Peter & Paul Parish Office or Joanne Schumacher at [jmschu@live.com](mailto:jmschu@live.com).*

## IN MEMORIAM

Please pray for the repose of the soul of Eileen Klaers, whose funeral Mass was held here at Ss. Peter & Paul on Saturday, December 28th. We express our deepest sympathy to Eileen's family and friends and pray that the love of God will provide them with comfort.

May Eileen rest in the eternal peace of Christ; and may the souls of the faithful departed, through the mercy of God, rest in peace. Amen.



“Today, solemn exposition of the Blessed Sacrament is the grace and need of our time. Society will be restored and renewed when all its members group themselves around our Emmanuel.”



St. Peter Julian Eymard

# Area Perpetual Eucharistic Adoration

Area Perpetual Adoration is in Our Lady of Loretto Chapel, which is located in the old Convent building on the Ss. Peter & Paul Church grounds. To sign up for an hour, please contact Sherry in the Parish Office (763-479-0535) or one of the members of our Adoration Core Team listed below.

## Adoration Chapel Core Team

Head Coordinator .....	Joanne .....	763.360.2639
Assistant Coordinator .....	Diane.....	612.730.9386
Night Division Leader:.....	Diane	
Morning Division Leader: .....	Judy .....	763.331.5703
Afternoon Division Leaders:.....	Lill .....	612.600.2050
Evening Division Leader: .....	Connie .....	763.228.8330



## Adoration Open Hours

### NIGHT TIME HOURS:

Sunday..... 2 AM  
Thursday ..... 2 AM  
Saturday..... 1 AM, 3 AM

### MORNING HOURS:

Sunday..... **11 AM\***  
Saturday..... **9 AM\***

### AFTERNOON HOURS:

Saturday ..... 5 PM

### EVENING HOURS:

Friday ..... **10 PM\***  
Saturday..... 7 PM, 8 PM

*\*2nd person is needed for these hours.*

For questions, or to inquire about taking an hour, go to the web-site by scanning this QR code, or call the Ss. Peter & Paul Parish Office Administrator at 763-479-0535.

